

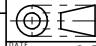
SOURCE: THE ORIGINAL DRAWING WERE FOUND ON THE INTERNET, THE NAMES OF THE DRAFTER OR DESIGNER WERE NOT STATED ON THE DRAWINGS. THE ORIGINAL DRAWINGS WERE STAMPED WITH THE FOLLOWING: "WATO LOCO WORKS, 11 SANDRA WAY ROSSMOYNE 6155 PHONE 4572008". NO DATE STATED ON THE DRAWINGS

TITLE
**A COAL FIRED MODEL OF A WELSH NARROW
 GAUGE STEAM LOCOMOTIVE "HEIDI-2"
 FOR 7-1/4" (184mm) GAUGE**

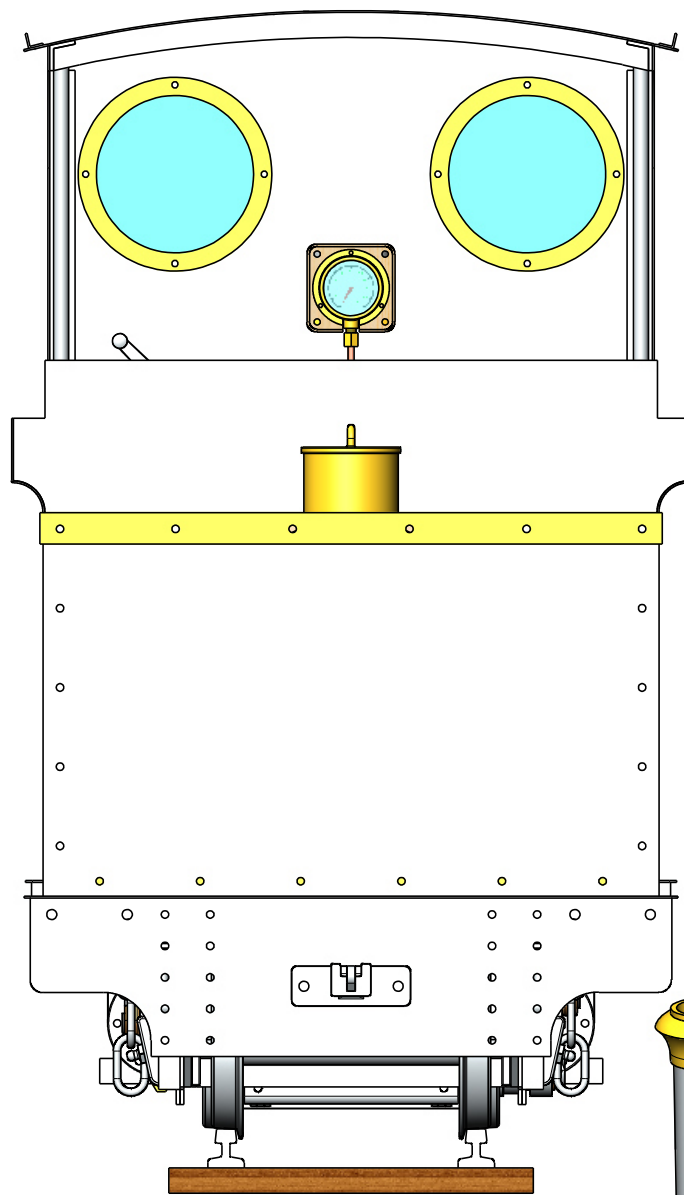
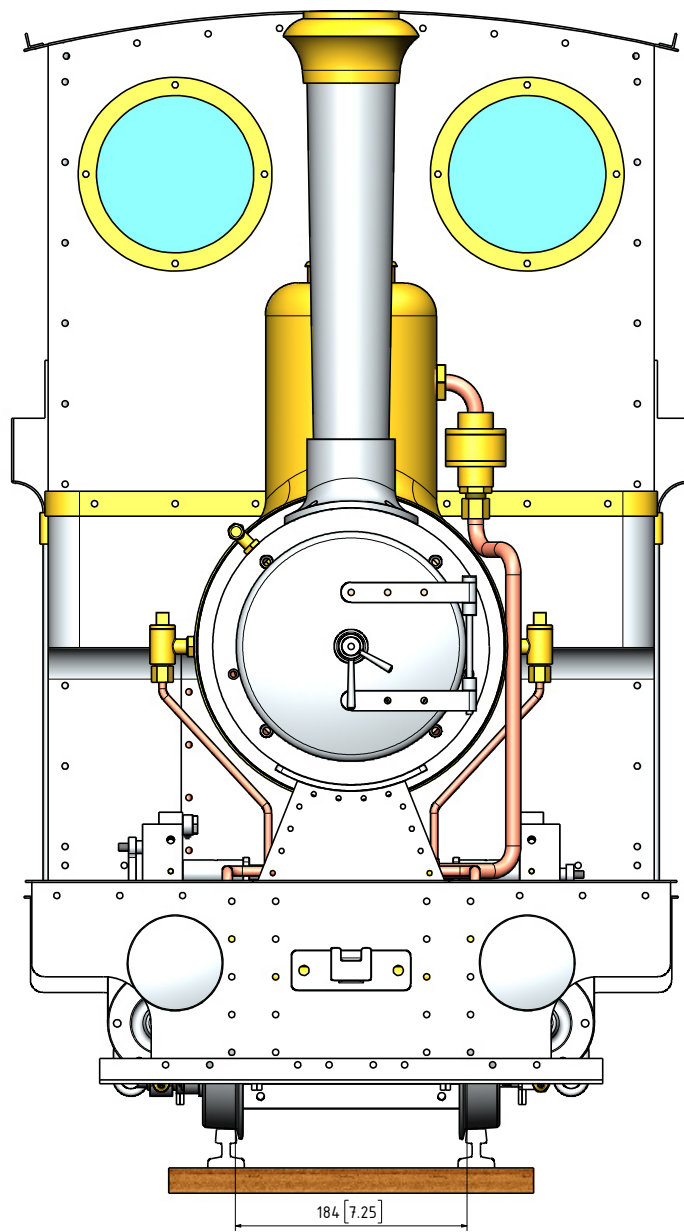
PLEASE NOTE THIS IS AN "A2" SIZE SHEET

DRAWING CONTENTS
GENERAL ARRANGEMENT

PROJECT No 07E-21-00
 JDW DRAUGHTING SERVICES
 J.A.M. DE WAAL, 12 BRIGHTWELL STREET PAKAKURA
 2110, NEW ZEALAND, PHONE: 0064 09 2988815, MOB:
 0211791000 E-MAIL: dewaal@xtra.co.nz.

PROJECTION
 **JDWDS** MODEL SCALE: 1:1
 DWG SCALE: 1:1 @A2 OR AS SHOWN
 DATE: OCTOBER 2022 Copyright © J.A.M. DE WAAL PAKAKURA NZ
 SHEET: 01 OF 15 **A2 No:07E-21-00-SHT01**

DRAWINGS ARE FOR PERSONAL USE ONLY NOT FOR COMMERCIAL PURPOSES



ADDITIONAL NOTES ABOUT THESE DRAWINGS:

- 1) NO MATERIALS HAVE BEEN SPECIFIED ON THESE DRAWINGS. THE BUILDER TO CHOOSE ITS OWN PREFERRED MATERIAL FOR THE PARTS/COMPONENTS. THE FOLLOWING COLOURS ON THE DRAWINGS INDICATES POSSIBLE MATERIALS WHICH CAN BE USED FOR PARTS: YELLOW=BRASS, LIGHT GREY=ALUMINIUM OR MILD STEEL, REDDISH BROWN=COPPER, DARK BROWN=BRONZE OR GUN METAL, WHITISH=SILVER STEEL OR STAINLESS STEEL
- 2) FASTENERS.
NO FASTENERS SUCH AS BOLTS, SCREWS, RIVETS, NUTS AND WASHERS HAVE BEEN SHOWN ON THESE DRAWINGS. THE BUILDER TO CHOOSE ITS OWN PREFERRED TYPE OF FASTENERS.
- 2) PRESSURE GAUGE.
THE RANGE OF THE PRESSURE GAUGE TO BE DETERMENT AFTER MAXIMUM BOILER PRESSURE IS ESTABLISHED AND THE AVAILABILITY ON THE MARKET. THE PRESSURE GAUGE IS A PROPRIETY ITEM.
- 3) PIPING
PREFERABLY ALL PIPING TO BE COPPER. THE PIPING ON THE DRAWINGS ARE INDICATIVE ONLY. THE BUILDER TO ESTABLISH THE PIPE LENGTH AND ROUTE FROM WORK PIECE. THE PIPE SIZES ARE INDICATIVE ONLY. THE BUILDER TO ESTABLISH THE AVAILABILITY OF THE PIPE SIZE(S) FROM THE LOCAL SUPPLIER(S). THE PIPE NUT(S) TO BE ADJUSTED TO THE USED PIPE SIZE.
- 4) BOILER.
BEFORE STARTING: THE BOILER AS SHOWN ON THESE DRAWING SHOULD BE INSPECTED BY AN AUTHORISED PROFESSIONAL ENGINEER. THE RUNNING AND MAXIMUM BOILER PRESSURE TO BE CALCULATED. MAKE SURE THE THE BOILER FULLY COMPLIES WITH THE LOCAL RULES AND REGULATIONS OF MODEL BOILERS. A COMPLIANCE AND TEST CERTIFICATE SHOULD BE OBTAINED.
BOILER INSULATION IS NOT SHOWN ON THESE DRAWINGS.
IF BOILER INSULATION IS PREFERRED THEN THE BUILDER TO SOURCE THE APPROPRIATE MATERIAL AND THICKNESS
THE BOILER STRAPS DIAMETER SHOULD BE ADJUSTED ACCORDINGLY.
- 5) DUMMY PARTS.
IF PREFERRED SOME OF THE DUMMY PARTS COULD BE REPLACED WITH REAL OPERATING PART(S). THE BUILDER TO DESIGN THE PART OR ALTERNATIVELY PURCHASE.
- 6) ENHANCEMENT
THE APPEARANCE OF THE LOCOMOTIVE COULD BE ENHANCED BY ADDING SOME EXTRA PARTS SUCH AS: LAMP HOLDERS, FRONT AND REAR LIGHTS, FLAG HOLDERS.

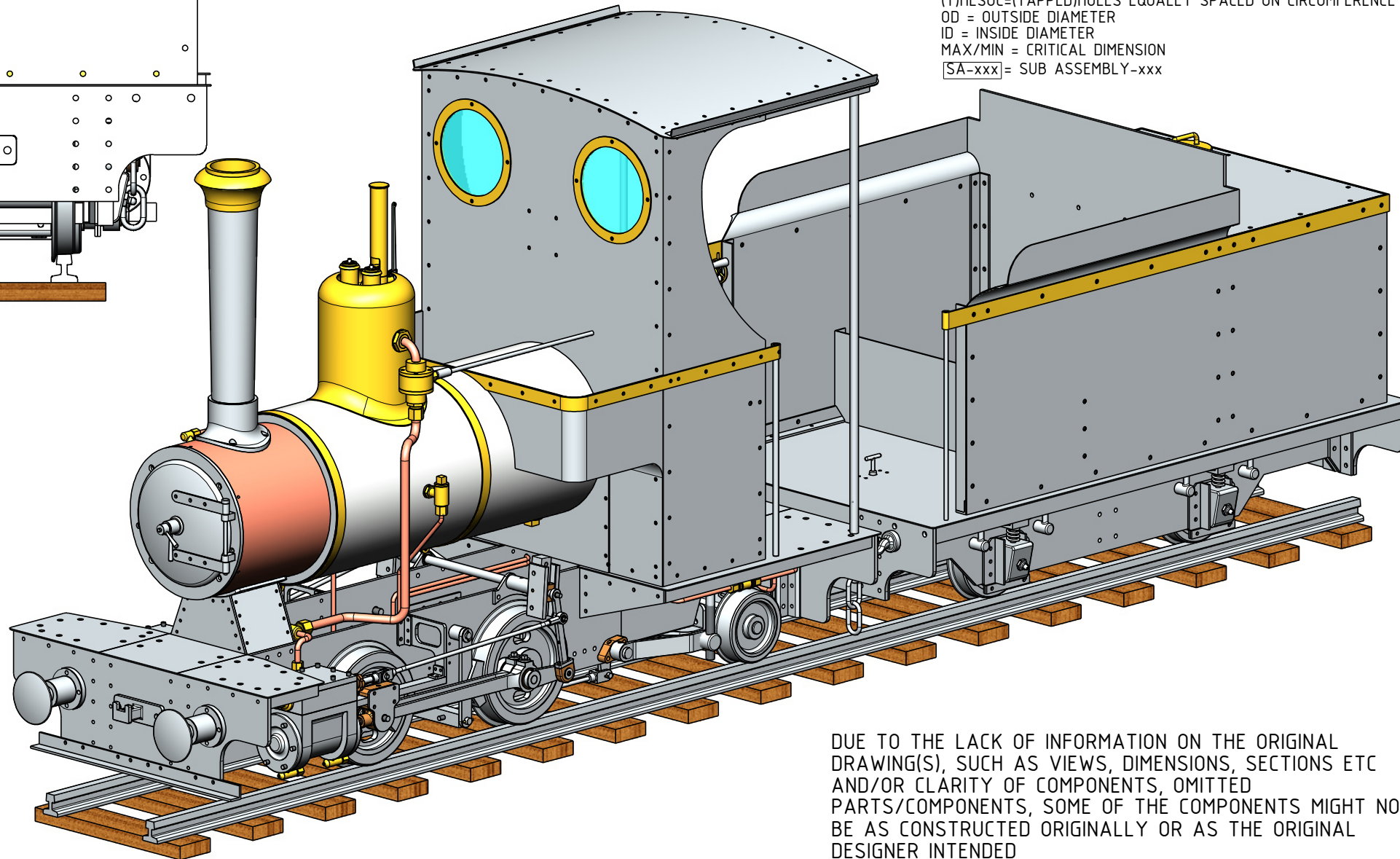
IMPORTANT NOTE:

BEFORE STARTING: IT IS STRONGLY ADVISED THAT THE BOILER AS SHOWN ON THESE DRAWINGS SHOULD BE INSPECTED BY AN AUTHORISED PROFESSIONAL ENGINEER AND THE WORKING AND MAXIMUM BOILER PRESSURE TO BE CALCULATED. MAKE SURE THE BOILER FULLY COMPLIES WITH THE LOCAL RULES AND REGULATIONS OF MODEL BOILERS. A COMPLIANCE AND SAFETY/TEST CERTIFICATE SHOULD BE OBTAINED.

OTHER ABBREVIATIONS

- AS = AS SHOWN
- DP = DEEP
- DAA= DRILL AFTER ASSEMBLY
- D&TAA= DRILL AND TAP AFTER ASSEMBLY
- CF = CLOSE FIT (SIZE FOR SIZE)
- PF = PRESS FIT
- PFAA= PRESS FIT AFTER ASSEMBLY
- PCD = PITCH CIRCLE DIAMETER
- RM = REAM
- HEX = HEXACON, 6SIDED
- CP = COMPRESSED
- KNL = KNURLED
- CSK = COUNTERSINK
- PL = PLACES
- DWL= DOWEL
- SPF= SPOTFACE
- (T)HESOP=(TAPPED)HOLES EQUALLY SPACED ON PCD
- (T)HESOC=(TAPPED)HOLES EQUALLY SPACED ON CIRCUMFERENCE
- OD = OUTSIDE DIAMETER
- ID = INSIDE DIAMETER
- MAX/MIN = CRITICAL DIMENSION
- [SA-xxx] = SUB ASSEMBLY-xxx

- NOTES:**
0. ALL DRAWINGS ARE IN METRIC MEASUREMENTS
 1. ALL ENGINEERING PRACTICES SHALL BE APPLIED WITH REGARDS TO HOLE AND SHAFT TOLERANCES.
 2. WHERE SCREWS OR BOLTS ARE USED THE CLEARANCE HOLES SHALL BE APPROXIMATELY 5% TO 8% LARGER THAN THE MATCHING TAPPED HOLE.
 3. PREFERABLY ALL TAPPED HOLES AND MATCHING SCREWS AND/OR BOLTS TO BE METRIC FINE (MF)
 4. MATERIALS SPECIFIED ON THE DRAWINGS ARE INDICATIVE ONLY. THE BUILDER CAN MAKE HIS/HER OWN MATERIAL CHOICE.
 5. ALL CONNECTIONS/JOINTS WHICH HAVE STEAM PRESSURE APPLIED TO IT SHALL BE SILVER/HARD SOLDERED.
 6. COMPRESSION SPRINGS ARE DRAWN IN COMPRESSED STATE (CP), UNCOMPRESSED STATE IS APPROX 40% TO 60% LONGER THEN COMPRESSED STATE.
 7. WHERE PREFERRED SCREW OR RIVETED CONNECTIONS CAN BE OMITTED AND PARTS CAN BE BONDED TOGETHER BY USING EITHER HIGH STRENGTH GLUE, EPOXY RESIN, OR SOLDER.
 8. PARTS WHICH ARE DIRECTLY EXPOSED TO STEAM AND/OR WATER SHOULD BE CONSTRUCTED USING NON-FERROUS OR NON CORROSIVE MATERIAL SUCH AS BRASS, BRONZE, GUNMETAL, STAINLESS STEEL, COPPER OR MONEL.
 9. THE ORDER IN WHICH THE PARTS/COMPONENTS ARE MANUFACTURED AND THE MODEL IS ASSEMBLED IS ENTIRELY LEFT TO THE BUILDER/MODEL MAKER.
 10. A COLOUR SCHEME FOR THIS PROJECT IS ENTIRELY LEFT UP TO THE MODEL MAKER.
 11. THE MANNER IN WHICH THE PARTS/COMPONENTS ARE MANUFACTURED IS ENTIRELY LEFT UP TO THE BUILDER.
 12. USE LOCTITE, ON SCREW OR PRESS FIT CONNECTIONS OR SURFACES, WERE DEEMED NECESSARY TO PREVENT PARTS FROM LOOSENING.
 13. WASHERS AND/OR SPRING WASHERS SHALL BE USED WHERE DEEMED NECESSARY.
 14. INQUIRE AT THE APPROPRIATE AUTHORITIES WHETHER OR NOT THIS BOILER REQUIRE A PRESSURE TEST CERTIFICATE.
 - XX. ERRORS AND/OR OMISSIONS MAY OCCUR IN THE DRAWINGS, DO NOT HESITATE TO CONTACT ME SO THAT THE ERRORS/OMISSIONS CAN BE RECTIFIED.



DUE TO THE LACK OF INFORMATION ON THE ORIGINAL DRAWING(S), SUCH AS VIEWS, DIMENSIONS, SECTIONS ETC AND/OR CLARITY OF COMPONENTS, OMITTED PARTS/COMPONENTS, SOME OF THE COMPONENTS MIGHT NOT BE AS CONSTRUCTED ORIGINALLY OR AS THE ORIGINAL DESIGNER INTENDED

SOURCE: THE ORIGINAL DRAWING WERE FOUND ON THE INTERNET, THE NAMES OF THE DRAFTER OR DESIGNER WERE NOT STATED ON THE DRAWINGS. THE ORIGINAL DRAWINGS WERE STAMPED WITH THE FOLLOWING: "WATO LOCO WORKS, 11 SANDRA WAY ROSSMOYNE 6155 PHONE 4572008". NO DATE STATED ON THE DRAWINGS

TITLE
A COAL FIRED MODEL OF A WELSH NARROW GAUGE STEAM LOCOMOTIVE "HEIDI-2" FOR 7-1/4" (184mm) GAUGE

DRAWING CONTENTS
FRONT & REAR VIEW, ISOMETRIC VIEW, NOTES

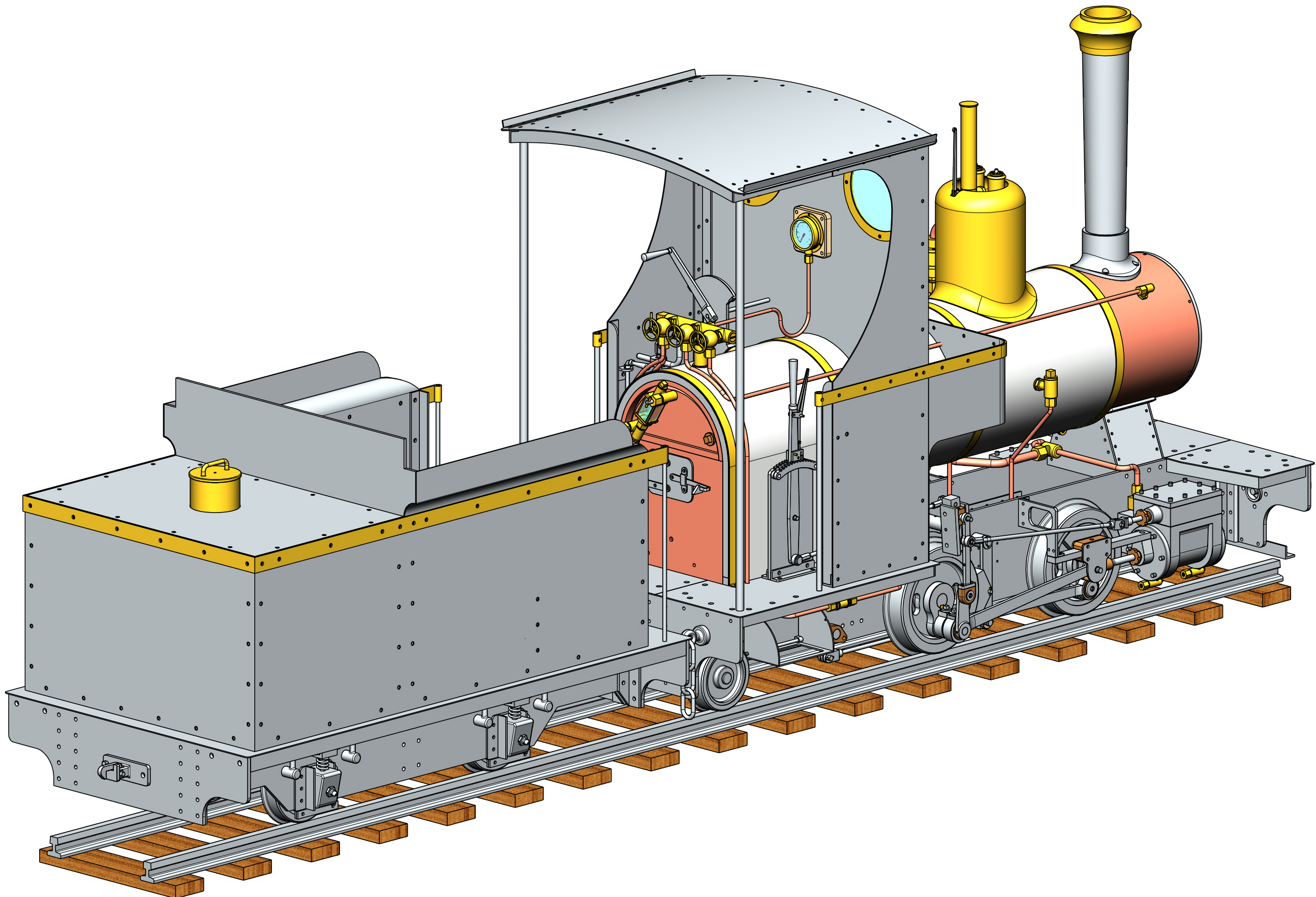
PROJECT No 07E-21-00
JDW DRAUGHTING SERVICES
J.A.M. DE WAAL, 12 BRIGHTWELL STREET PAPA KURA
2110, NEW ZEALAND. PHONE: 0064 09 2988815. MOB: 0211791000 E-MAIL: dewaal@xtra.co.nz.

PROJECTION
JDWDS MODEL SCALE: 1:1
DWG SCALE: 1:1 @A2 OR AS SHOWN
OCTOBER 2022 Copyright © J.A.M. DE WAAL PAPA KURA NZ
SHEET: 02 OF 15 **A2** No:07E-21-00-SHT02

PLEASE NOTE THIS IS AN "A2" SIZE SHEET

DRAWINGS ARE FOR PERSONAL USE ONLY NOT FOR COMMERCIAL PURPOSES

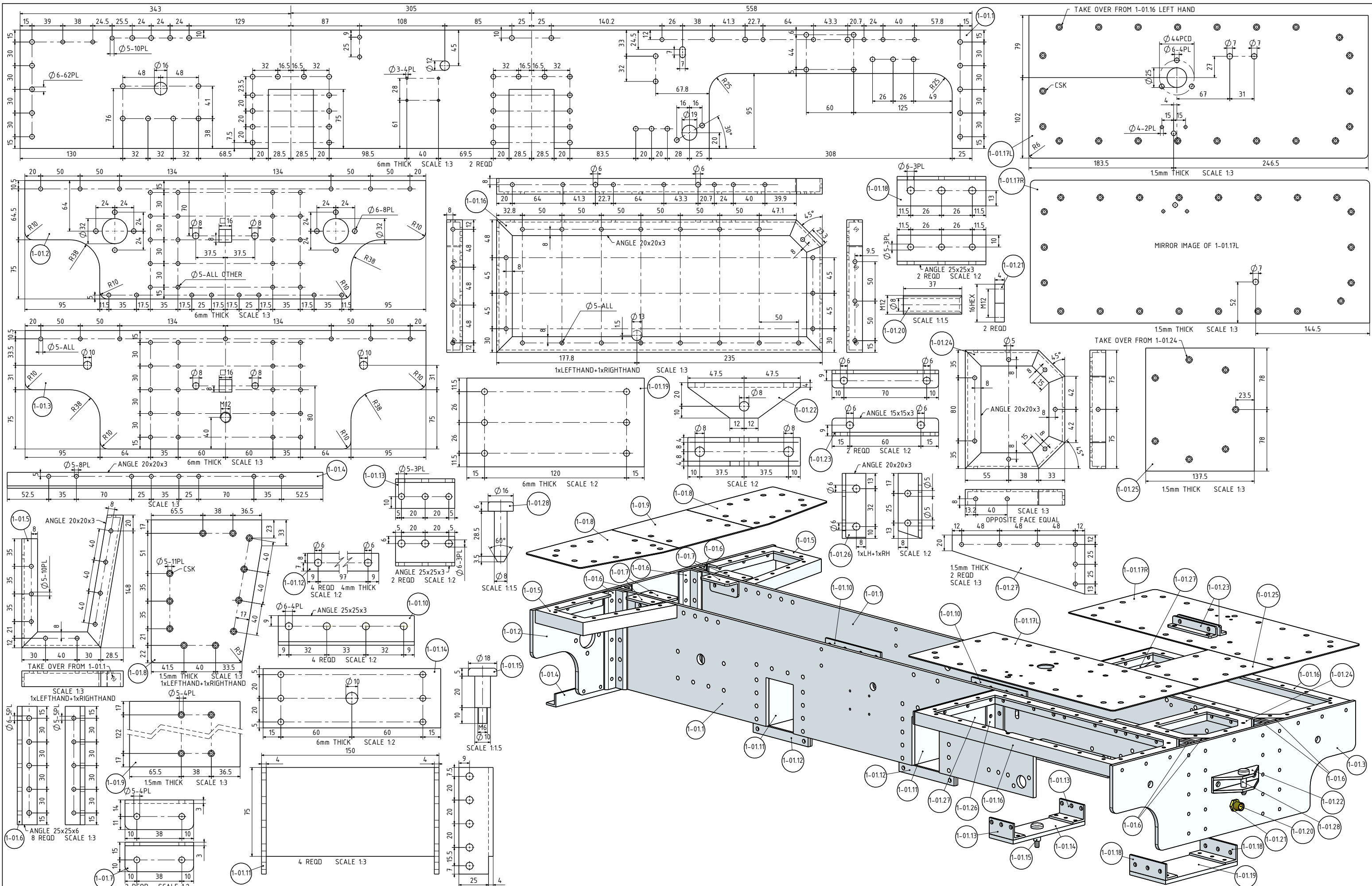
QTY.	PART NUMBER
1	07E-21-00-1-01-UNDER FRAME WORK
2	07E-21-00-1-02-SLIDE BLOCK BEARING PLATE
2	07E-21-00-1-03-MAIN BEARING
2	07E-21-00-1-03-MAIN BEARING
1	07E-21-00-1-04-MOTION BRACKET
1	07E-21-00-1-04-MOTION BRACKET
2	07E-21-00-1-05-CYLINDER
1	07E-21-00-1-06-VALVE CHEST+COVER
1	07E-21-00-1-06-VALVE CHEST+COVER
2	07E-21-00-1-07-STEAM INLET NIPPLE
2	07E-21-00-1-08-CYLINDER FRONT COVER
1	07E-21-00-1-09-CYLINDER REAR COVER
1	07E-21-00-1-09-CYLINDER REAR COVER
1	07E-21-00-1-10-BOILER SADDLE
2	07E-21-00-1-11-BUFFER
1	07E-21-00-1-12-FRONT PULL HOOK
1	07E-21-00-1-13-TENDER PULL HOOK
1	07E-21-00-1-14-HAND BRAKE COLUMN
1	07E-21-00-1-15-BRAKE SHAFT BEARING
2	07E-21-00-1-16-BRAKE HANGER PIVOT SHAFT
4	07E-21-00-1-17-CYLINDER DRAIN LOCK
1	07E-21-00-1-18-STEAM EXHAUST PIPE
1	07E-21-00-1-19-BOILER SHELL
19	07E-21-00-1-20-WATER TUBE 19x1.6
3	07E-21-00-1-21-INSULATION RING
1	07E-21-00-1-22-FIRE BOX INSULATION RING
1	07E-21-00-1-23-BACK HEAD INSULATION SURROUND
1	07E-21-00-1-24-FRONT PART INSULATION
1	07E-21-00-1-25-MIDDLE PART INSULATION
1	07E-21-00-1-26-FIRE BOX INSULATION
1	07E-21-00-1-27-BOILER GLADDING
1	07E-21-00-1-28-REVERSER STAND
1	07E-21-00-1-29-SMOKE BOX CROSSBAR
1	07E-21-00-1-30-SMOKE BOX DOOR
2	07E-21-00-1-31-SMOKE DOOR HING BLOCK
1	07E-21-00-1-32-SMOKE BOX DOOR DART
1	07E-21-00-1-33-CHIMNEY
1	07E-21-00-1-34-STEAM DOME
2	07E-21-00-1-35-SAFETY VALVE
1	07E-21-00-1-36-ORGAN PIPE WHISTLE
2	07E-21-00-1-37-CHECK VALVE
1	07E-21-00-1-38-REG. ADAPTOR+REG. BODY
1	07E-21-00-1-39-REG. CONTROL SHAFT MNTG. PLATE
1	07E-21-00-1-40-REG. OPERATOR HANDLE
1	07E-21-00-1-41-STEAM MANIFOLD
3	07E-21-00-1-42-ON-OFF VALVE
1	07E-21-00-1-43-INSPECTION PLUG
1	07E-21-00-1-44-BLOWER ELBOW
1	07E-21-00-1-45-BLOWER
1	07E-21-00-1-46-EXTERNAL BLOWER PIPE
1	07E-21-00-1-47-WTR. LVL INDICATOR
1	07E-21-00-1-48-WTR. LVL GAUGE SAFETY CAGE
1	07E-21-00-1-49-FIRE BOX DOOR
1	07E-21-00-1-50-FIRE BOX DOOR LEDGE
1	07E-21-00-1-51-ASHPAN
1	07E-21-00-1-52-GRATE
1	07E-21-00-1-53-DRAIN COCK ON-OFF VALVE
1	07E-21-00-1-54-DUMMY STEAM OPERATED INJECTOR
1	07E-21-00-1-54-DUMMY STEAM OPERATED INJECTOR
2	07E-21-00-1-55-BRAKE HANGER
1	07E-21-00-1-56-BRAKE HANGER CROSSBAR
2	07E-21-00-1-57-BRAKE SHOE
1	07E-21-00-1-58-BRAKE SHAFT
2	07E-21-00-1-59-BRAKE PULL ROD
1	07E-21-00-1-60-BRAKE HANDLE SCREW
1	07E-21-00-1-61-BRAKE SCREW NUT
2	07E-21-00-1-62-SAFETY CHAIN
1	07E-21-00-1-63-DRIVERS CABIN
1	07E-21-00-1-64-PRESSURE GAUGE
1	07E-21-00-1-65-PRESSURE GAUGE STEAM PIPE
1	07E-21-00-1-66-CYLINDER STEAM DELIVERY CROSS PIPE
1	07E-21-00-1-67-MAIN SUPPLY STEAM PIPE
1	07E-21-00-1-68-CHECK VALVE SUPPLY PIPE
1	07E-21-00-1-68-CHECK VALVE SUPPLY PIPE
1	07E-21-00-1-69-INJECTOR STEAM SUPPLY PIPE
1	07E-21-00-1-69-INJECTOR STEAM SUPPLY PIPE
2	07E-21-00-1-70-WATER VALVE OPERATOR HANDLE
2	07E-21-00-1-71-WATER SUPPLY ON-OFF VALVE
1	07E-21-00-1-72-INJECTOR WATER SUPPLY PIPE
1	07E-21-00-1-72-INJECTOR WATER SUPPLY PIPE
1	07E-21-00-1-73-DRAIN COCKS STEAM SUPPLY PIPE
1	07E-21-00-1-74-TENDER UNDER FRAME
4	07E-21-00-1-75-TENDER LEAVE SPING
4	07E-21-00-1-76-TENDER AXLE BOX
1	07E-21-00-1-77-TENDER PULL HOOK
1	07E-21-00-1-78-TENDER UPPER STRUCTURE
1	07E-21-00-1-79-TENDER WATER TANK
1	07E-21-00-1-80-TENDER WATER SUPPLY ON-OFF VALVE
1	07E-21-00-1-81-TENDER WATER TANK SUPPLY PIPE
1	07E-21-00-1-81-TENDER WATER TANK SUPPLY PIPE
1	07E-21-00-1-82-WATER SUPPLY PIPE
2	07E-21-00-1-83-TENDER SAFETY CHAIN HOOK
1	07E-21-00-1-84-WATER CONNECTING HOSE
1	07E-21-00-2-01-DRIVING WHEELS+AXLE
1	07E-21-00-2-02-COUPLED WHEELS+AXLE
1	07E-21-00-2-03-COUPLING ROD
1	07E-21-00-2-03-COUPLING ROD
1	07E-21-00-2-04-PISTON+CROSSHEAD
1	07E-21-00-2-04-PISTON+CROSSHEAD
1	07E-21-00-2-05-CON-ROD
1	07E-21-00-2-05-CON-ROD
1	07E-21-00-2-06-SLIDE VALVE
1	07E-21-00-2-06-SLIDE VALVE
2	07E-21-00-2-07-SLIDE VALVE CON-ROD
1	07E-21-00-2-08-SLIDE BLOCK+SHAFT
2	07E-21-00-2-09-DIE BLOCK
2	07E-21-00-2-10-VIBRATING LEVER
1	07E-21-00-2-11-REVERSING HANDLE
1	07E-21-00-2-12-REACH ROD
1	07E-21-00-2-13-TRAILING BOGIE
1	07E-21-00-2-14-TRAILING WHEELS+AXLE
2	07E-21-00-2-15-TENDER WHEELS+AXLE
1	07E-21-00-M-184mm-RAIL



SOURCE: THE ORIGINAL DRAWING WERE FOUND ON THE INTERNET, THE NAMES OF THE DRAFTER OR DESIGNER WERE NOT STATED ON THE DRAWINGS. THE ORIGINAL DRAWINGS WERE STAMPED WITH THE FOLLOWING: "WATO LOCO WORKS, 11 SANDRA WAY ROSSMOYNE 6155 PHONE 4572008". NO DATE STATED ON THE DRAWINGS

TITLE A COAL FIRED MODEL OF A WELSH NARROW GAUGE STEAM LOCOMOTIVE "HEIDI-2" FOR 7-1/4" (184mm) GAUGE PLEASE NOTE THIS IS AN "A2" SIZE SHEET	DRAWING CONTENTS ISOMETRIC VIEW, BILL OF MATERIALS	PROJECT No 07E-21-00	PROJECTION 	JDWDS MODEL SCALE: 1:1
		JDW DRAUGHTING SERVICES J.A.M. DE WAAL, 12 BRIGHTWELL STREET PAPA KURA 2110, NEW ZEALAND, PHONE: 0064 09 2988815, MOB: 0211791000 E-MAIL: dewaal@xtra.co.nz.	OCTOBER 2022 SHEET: 03 OF 15	DWG SCALE: 1:1 @A2 OR AS SHOWN Copyright © J.A.M. DE WAAL PAPA KURA NZ A2 No:07E-21-00-SHT03

DRAWINGS ARE FOR PERSONAL USE ONLY NOT FOR COMMERCIAL PURPOSES



SOURCE: THE ORIGINAL DRAWING WERE FOUND ON THE INTERNET, THE NAMES OF THE DRAFTER OR DESIGNER WERE NOT STATED ON THE DRAWINGS. THE ORIGINAL DRAWINGS WERE STAMPED WITH THE FOLLOWING: "WATO LOCO WORKS, 11 SANDRA WAY ROSSMOYNE 6155 PHONE 4572008". NO DATE STATED ON THE DRAWINGS

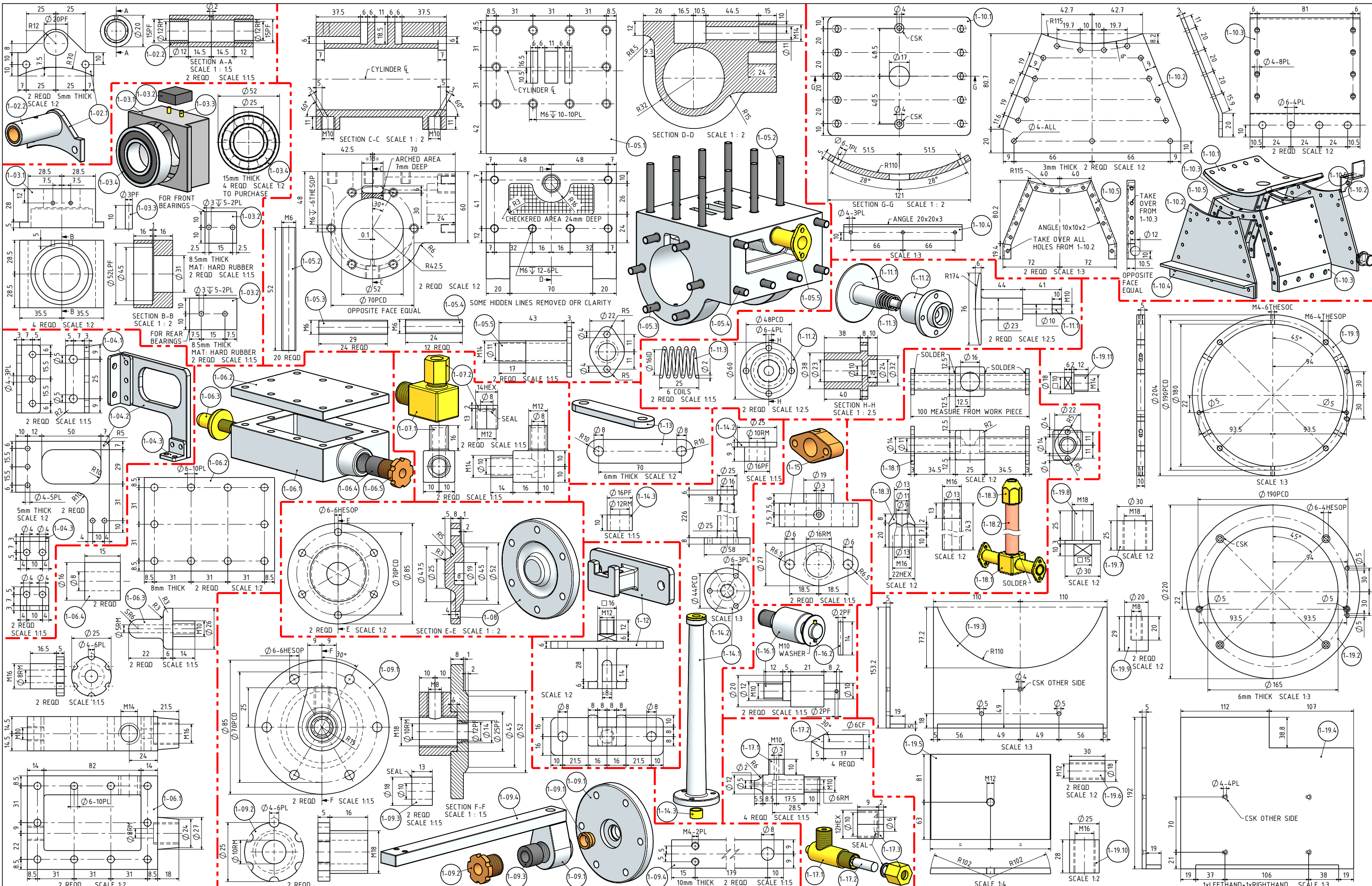
TITLE
A COAL FIRED MODEL OF A WELSH NARROW GAUGE STEAM LOCOMOTIVE "HEIDI-2" FOR 7-1/4" (184mm) GAUGE

DRAWING CONTENTS
PARTS AND ASSEMBLIES

PROJECT No 07E-21-00
 JDW DRAUGHTING SERVICES
 J.A.M. DE WAAL, 12 BRIGHTWELL STREET PAPAOKURA
 2110, NEW ZEALAND. PHONE: 0064 09 2988815. MOB: 0211791000 E-MAIL: dewaal@xtra.co.nz.

PROJECTION
JDWDS MODEL SCALE: 1:1
 DWG SCALE: 1:1 @A2 OR AS SHOWN
 DATE: OCTOBER 2022 Copyright © J.A.M. DE WAAL PAPAOKURA NZ
 SHEET: 04 OF 15 **A2 No:07E-21-00-SHT04**

PLEASE NOTE THIS IS AN "A2" SIZE SHEET **DRAWINGS ARE FOR PERSONAL USE ONLY NOT FOR COMMERCIAL PURPOSES**



SOURCE: THE ORIGINAL DRAWING WERE FOUND ON THE INTERNET, THE NAMES OF THE DRAFTER OR DESIGNER WERE NOT STATED ON THE DRAWINGS. THE ORIGINAL DRAWINGS WERE STAMPED WITH THE FOLLOWING: "WATO LOCO WORKS, 11 SANDRA WAY ROSSMOYNE 6155 PHONE 4572008". NO DATE STATED ON THE DRAWINGS

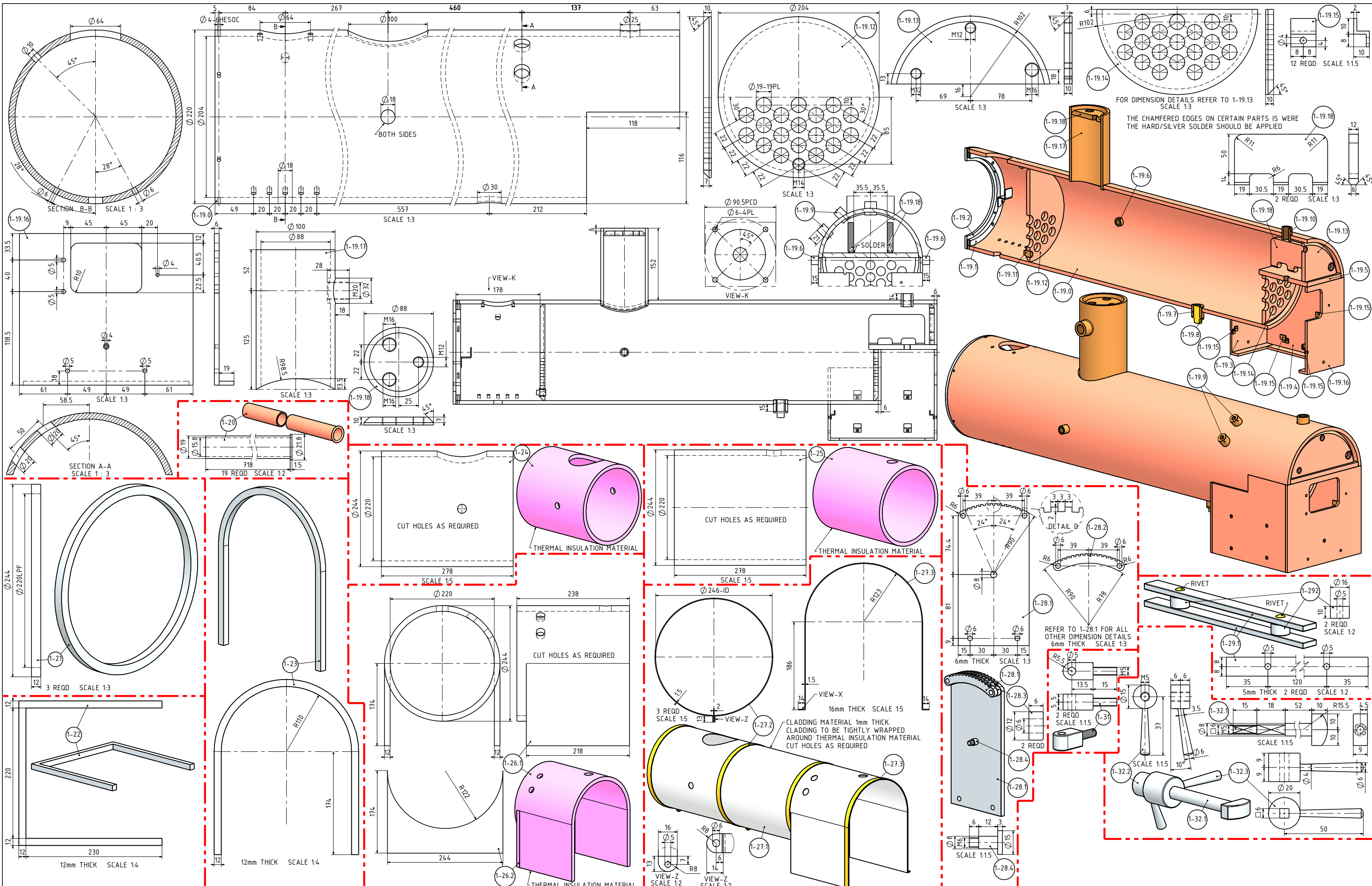
TITLE
A COAL FIRED MODEL OF A WELSH NARROW GAUGE STEAM LOCOMOTIVE "HEIDI-2" FOR 7-1/4" (184mm) GAUGE

DRAWING CONTENTS
PARTS AND ASSEMBLIES

PROJECT No 07E-21-00
 JDW DRAUGHTING SERVICES
 J.A.M. DE WAAL, 12 BRIGHTWELL STREET PAPA KURA
 2110, NEW ZEALAND. PHONE: 0064 09 2988815. MOB: 0211791000 E-MAIL: dewaal@xtra.co.nz.

PROJECTION
JDWDS MODEL SCALE: 1:1
 DWG SCALE: 1:1 @A2 OR AS SHOWN
 DATE: OCTOBER 2022 Copyright © J.A.M. DE WAAL PAPA KURA NZ
 SHEET: 05 OF 15 **A2 No:07E-21-00-SHT05**

PLEASE NOTE THIS IS AN "A2" SIZE SHEET **DRAWINGS ARE FOR PERSONAL USE ONLY NOT FOR COMMERCIAL PURPOSES**



SOURCE: THE ORIGINAL DRAWING WERE FOUND ON THE INTERNET, THE NAMES OF THE DRAFTER OR DESIGNER WERE NOT STATED ON THE DRAWINGS. THE ORIGINAL DRAWINGS WERE STAMPED WITH THE FOLLOWING: "WATO LOCO WORKS, 11 SANDRA WAY ROSSMOYNE 6155 PHONE 4572008". NO DATE STATED ON THE DRAWINGS

TITLE
A COAL FIRED MODEL OF A WELSH NARROW GAUGE STEAM LOCOMOTIVE "HEIDI-2" FOR 7-1/4" (184mm) GAUGE

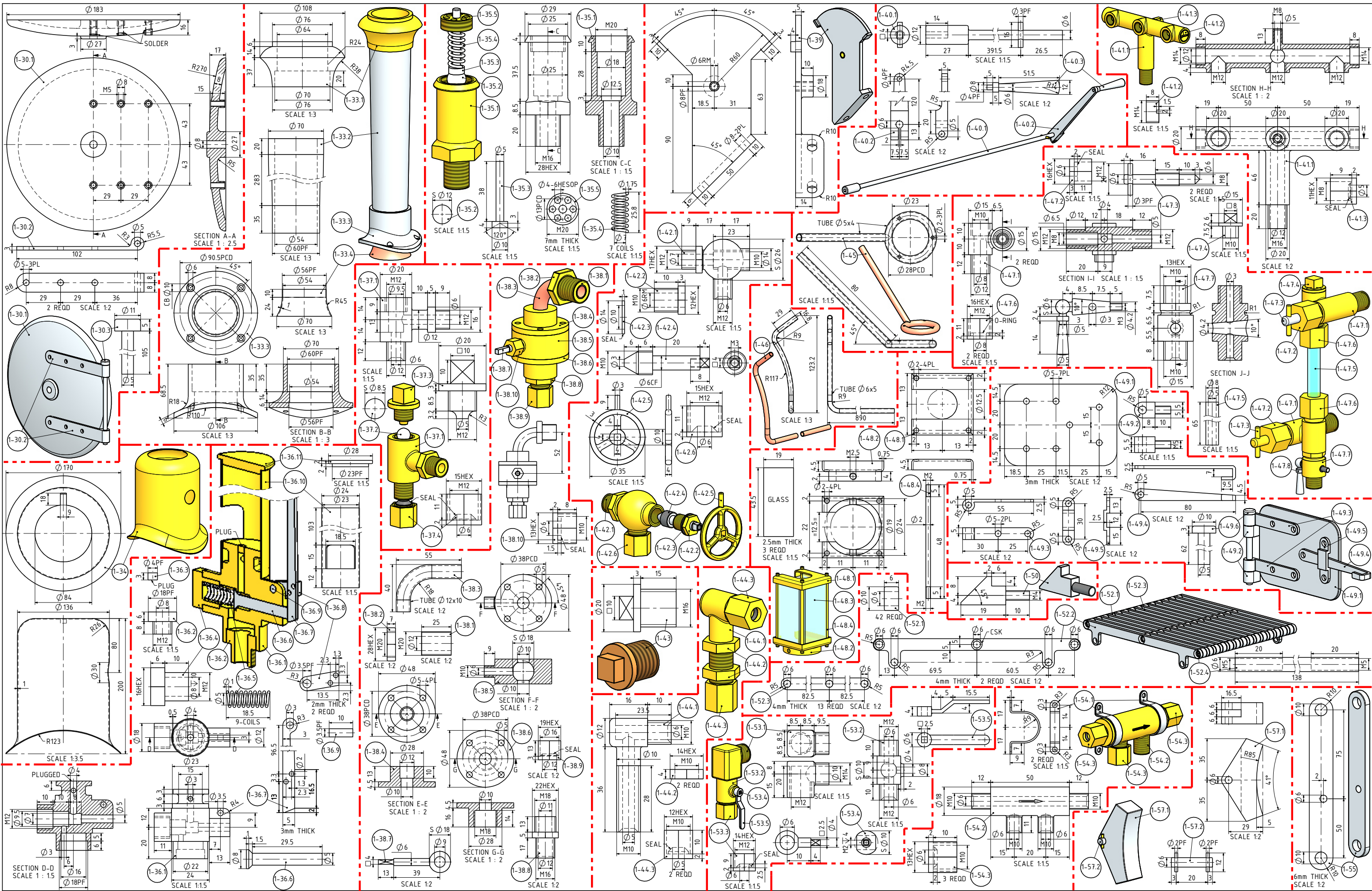
DRAWING CONTENTS
PARTS AND ASSEMBLIES

PROJECT No 07E-21-00
 JDW DRAUGHTING SERVICES
 J.A.M. DE WAAL, 12 BRIGHTWELL STREET PAKAPURA
 2110, NEW ZEALAND, PHONE: 0064 09 2988815, MOB: 0211791000 E-MAIL: dewaal@xtra.co.nz.

PROJECTION
JDWDS MODEL SCALE: 1:1
 DWG SCALE: 1:1 @A2 OR AS SHOWN
 DATE: OCTOBER 2022 Copyright © J.A.M. DE WAAL PAKAPURA NZ
 SHEET: 06 OF 15 **A2 No:07E-21-00-SHT06**

PLEASE NOTE THIS IS AN "A2" SIZE SHEET

DRAWINGS ARE FOR PERSONAL USE ONLY NOT FOR COMMERCIAL PURPOSES



SOURCE: THE ORIGINAL DRAWING WERE FOUND ON THE INTERNET, THE NAMES OF THE DRAFTER OR DESIGNER WERE NOT STATED ON THE DRAWINGS. THE ORIGINAL DRAWINGS WERE STAMPED WITH THE FOLLOWING: "WATO LOCO WORKS, 11 SANDRA WAY ROSSMOYNE 6155 PHONE 4572008". NO DATE STATED ON THE DRAWINGS

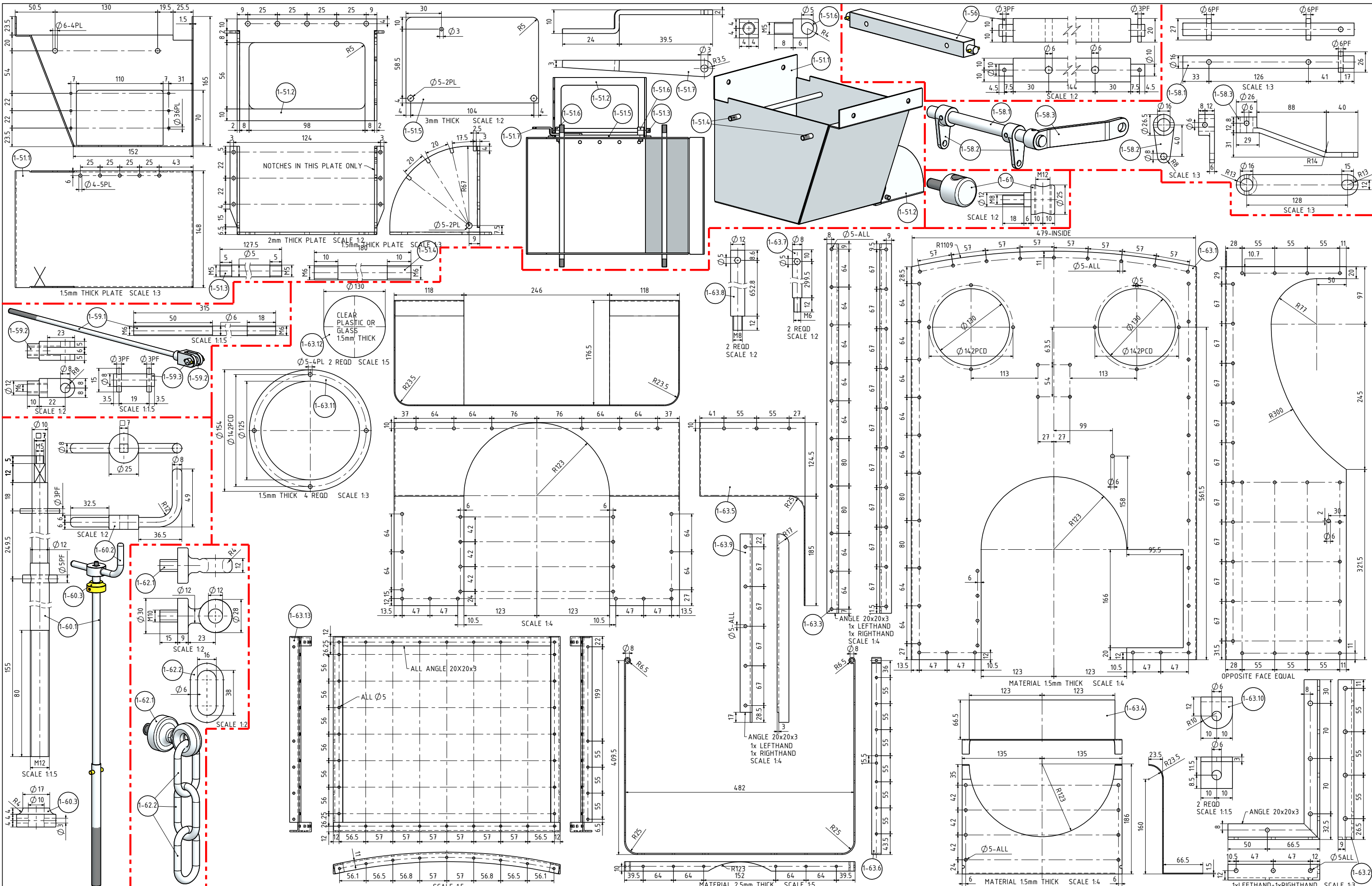
TITLE
**A COAL FIRED MODEL OF A WELSH NARROW
 GAUGE STEAM LOCOMOTIVE "HEIDI-2"
 FOR 7-1/4" (184mm) GAUGE**

DRAWING CONTENTS
PARTS AND ASSEMBLIES

PROJECT No 07E-21-00
 JDW DRAUGHTING SERVICES
 J.A.M. DE WAAL, 12 BRIGHTWELL STREET PAPA KURA
 2110, NEW ZEALAND. PHONE: 0064 09 2988815. MOB:
 0211791000 E-MAIL: dewaal@xtra.co.nz.

PROJECTION
JDWDS MODEL SCALE: 1:1
 DWG SCALE: 1:1 @A2 OR AS SHOWN
 OCTOBER 2022 Copyright © J.A.M. DE WAAL PAPA KURA NZ
 SHEET: 07 OF 15 **A2 No:07E-21-00-SHT07**

PLEASE NOTE THIS IS AN "A2" SIZE SHEET DRAWINGS ARE FOR PERSONAL USE ONLY NOT FOR COMMERCIAL PURPOSES



SOURCE: THE ORIGINAL DRAWING WERE FOUND ON THE INTERNET, THE NAMES OF THE DRAFTER OR DESIGNER WERE NOT STATED ON THE DRAWINGS. THE ORIGINAL DRAWINGS WERE STAMPED WITH THE FOLLOWING: "WATO LOCO WORKS, 11 SANDRA WAY ROSSMOYNE 6155 PHONE 4572008". NO DATE STATED ON THE DRAWINGS

TITLE
**A COAL FIRED MODEL OF A WELSH NARROW
 GAUGE STEAM LOCOMOTIVE "HEIDI-2"
 FOR 7-1/4" (184mm) GAUGE**

DRAWING CONTENTS
PARTS AND ASSEMBLIES

PROJECT No 07E-21-00
 JDW DRAUGHTING SERVICES
 J.A.M. DE WAAL, 12 BRIGHTWELL STREET PAKAPURA
 2110, NEW ZEALAND. PHONE: 0064 09 2988815. MOB:
 0211791000 E-MAIL: dewaal@xtra.co.nz.

PROJECTION
JDWDS MODEL SCALE: 1:1
 DWG SCALE: 1:1 @A2 OR AS SHOWN
 DATE: OCTOBER 2022 Copyright © J.A.M. DE WAAL PAKAPURA NZ
 SHEET: 08 OF 15 **A2** No:07E-21-00-SHT08

PLEASE NOTE THIS IS AN "A2" SIZE SHEET

DRAWINGS ARE FOR PERSONAL USE ONLY NOT FOR COMMERCIAL PURPOSES